

Appendix 1

POS DVR

TABLE OF CONTENTS

1.1 HARDWARE INSTALLATION

1.1.1 Parts

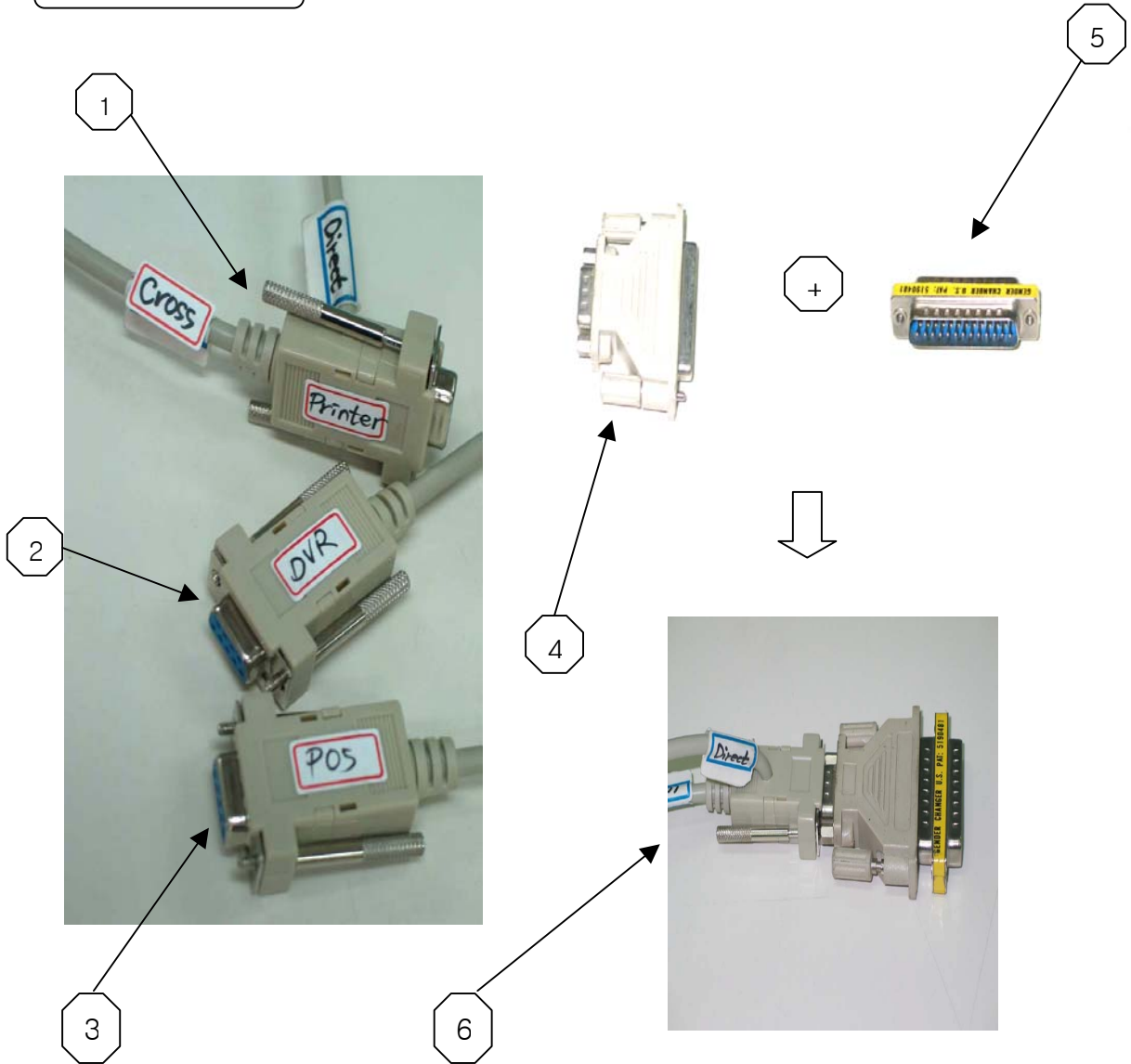
1.1.2 Installation

1.2 SOFTWARE INSTALLATION

1.2.1 Installation & Setup

1.1 HARDWARE INSTALLATION

1.1.1. Parts



Part Names



7

1. RS232 Serial Cables (Cross & Direct)
2. RS232 Serial Cable
3. RS232 Serial Cable
4. RS232 Serial Converter (9 pins into 25 pins)
5. Gender Changer
6. #1 + #4 + #5
7. DVR
8. POS Printer
9. Point of Sales (POS)



8



9

1.1.2 Installation

Part # 2 goes into the COM port (serial port) 1 of Part # 7.



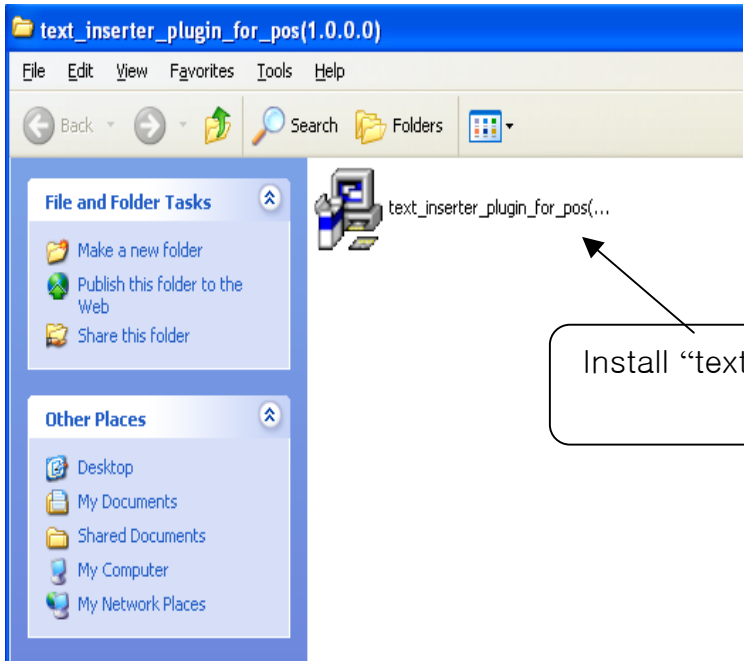
Part # 1 goes into the serial port of Part # 8.

Part # 3 goes into the serial port of Part # 9.

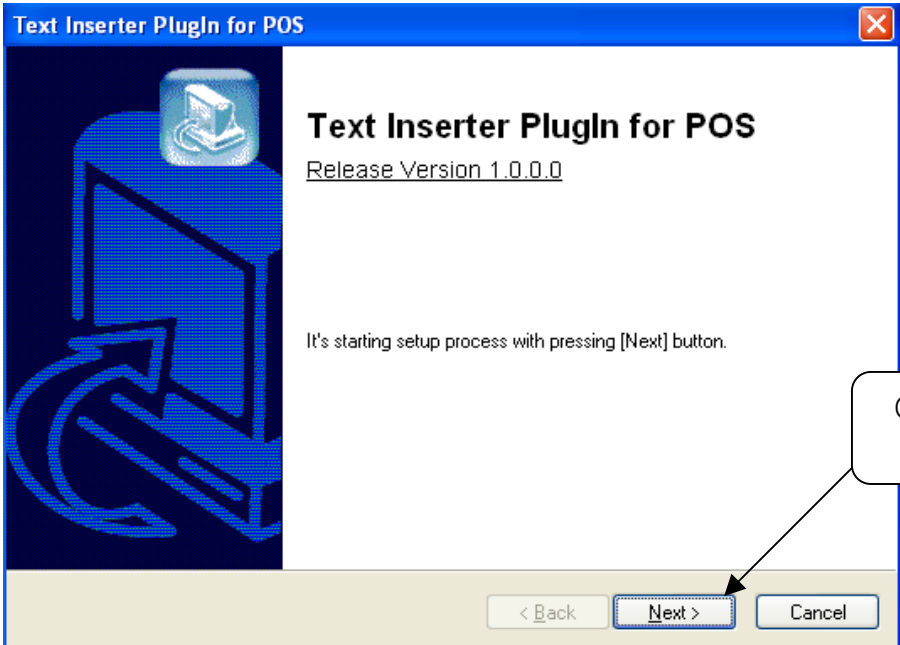


1.2 SOFTWARE INSTALLATION

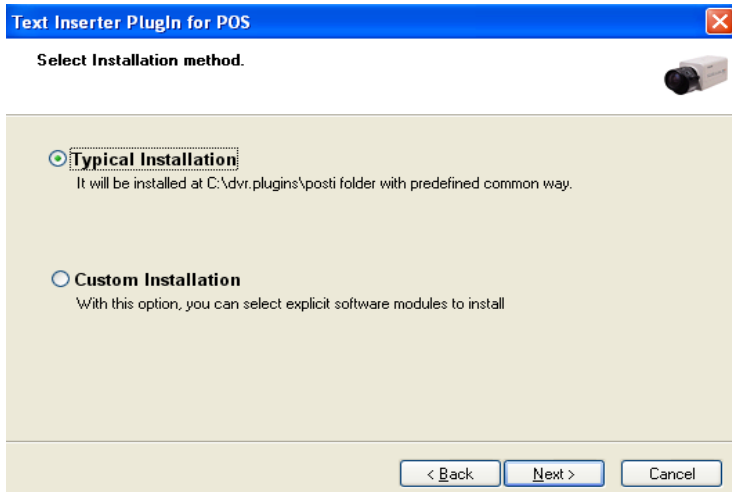
1.2.1 Installation & Setup



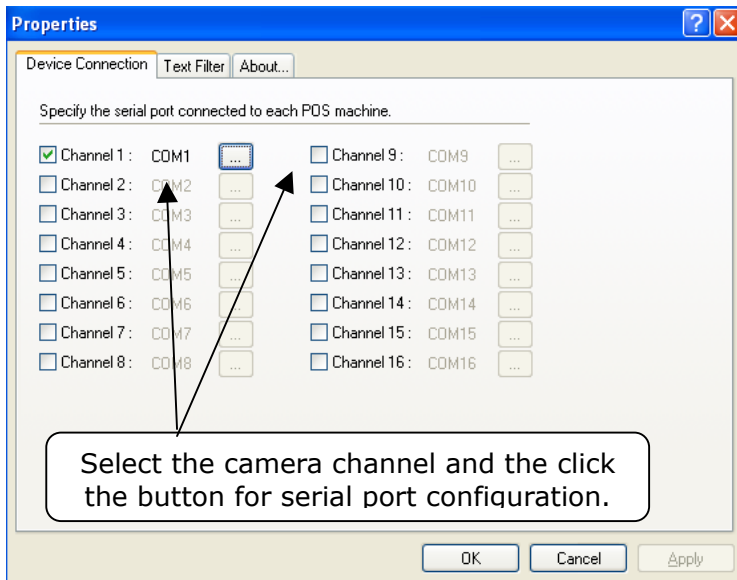
Install "text_inserter_plugin_for_pos" on DVR Server.



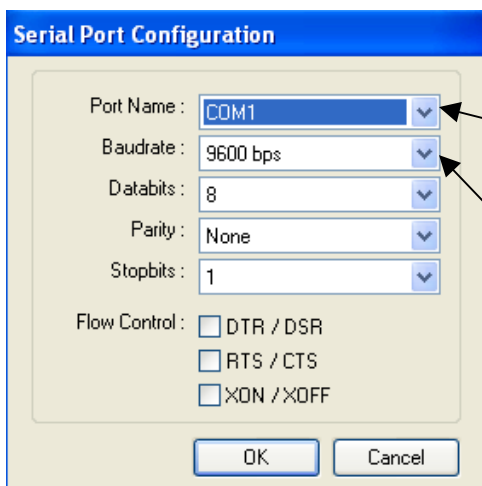
Click "Next" to start.



Select "Typical Installation" for auto-installation.

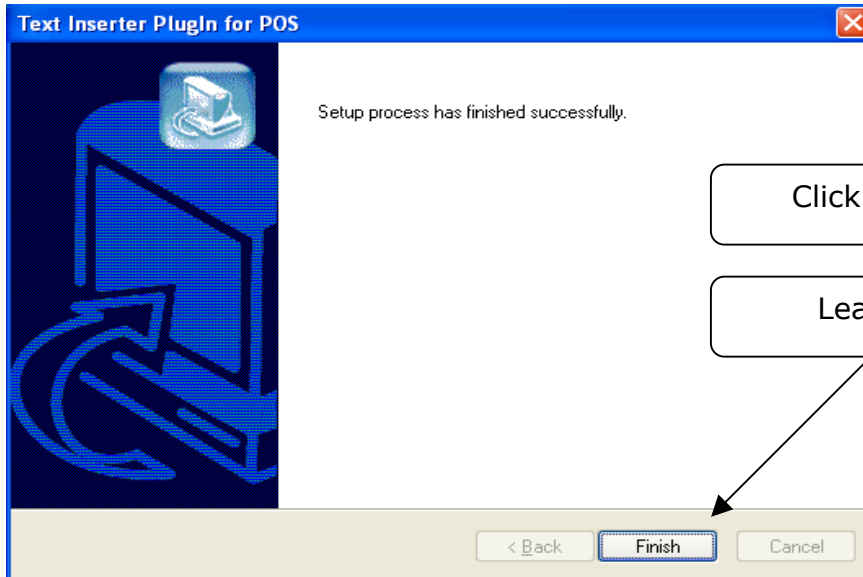


Select the camera channel and the click the button for serial port configuration.



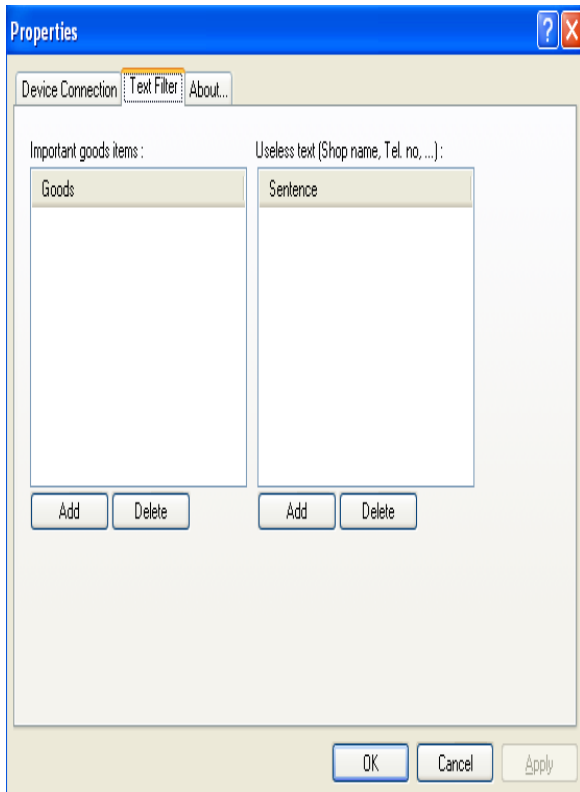
Make sure to select "COM1" since the POS printer's connected to COM port 1.

The Baud rate value is normally 9600.

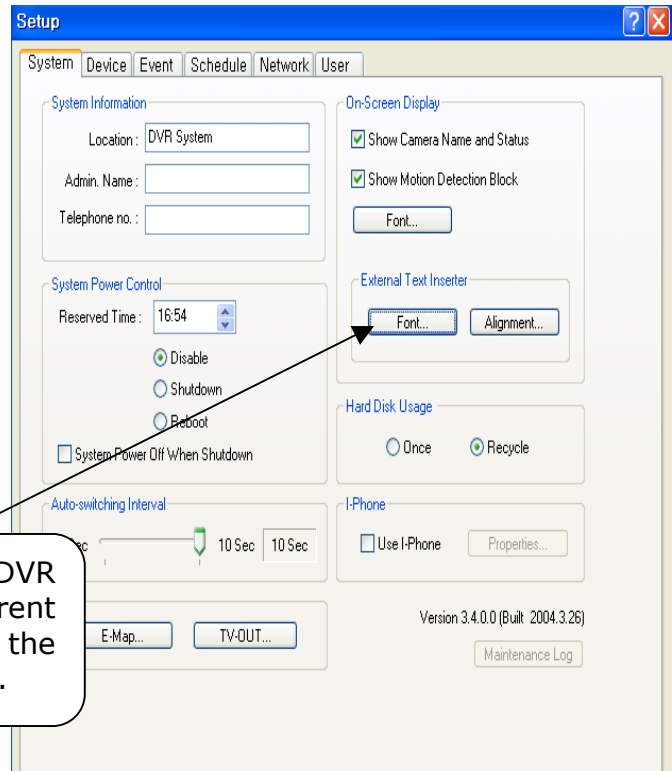


Click "Finish" to complete.

Leave everything else.



Select words to be highlighted and words to be omitted.



"External Text Inserter" in the DVR Setup allows you to choose different fonts, different corners and the number of lines for overlaid texts.